



Industrial and warehouse complex

Presentation of a property
complex

Moscow 2015

Complex location

Complex location



Moscow region

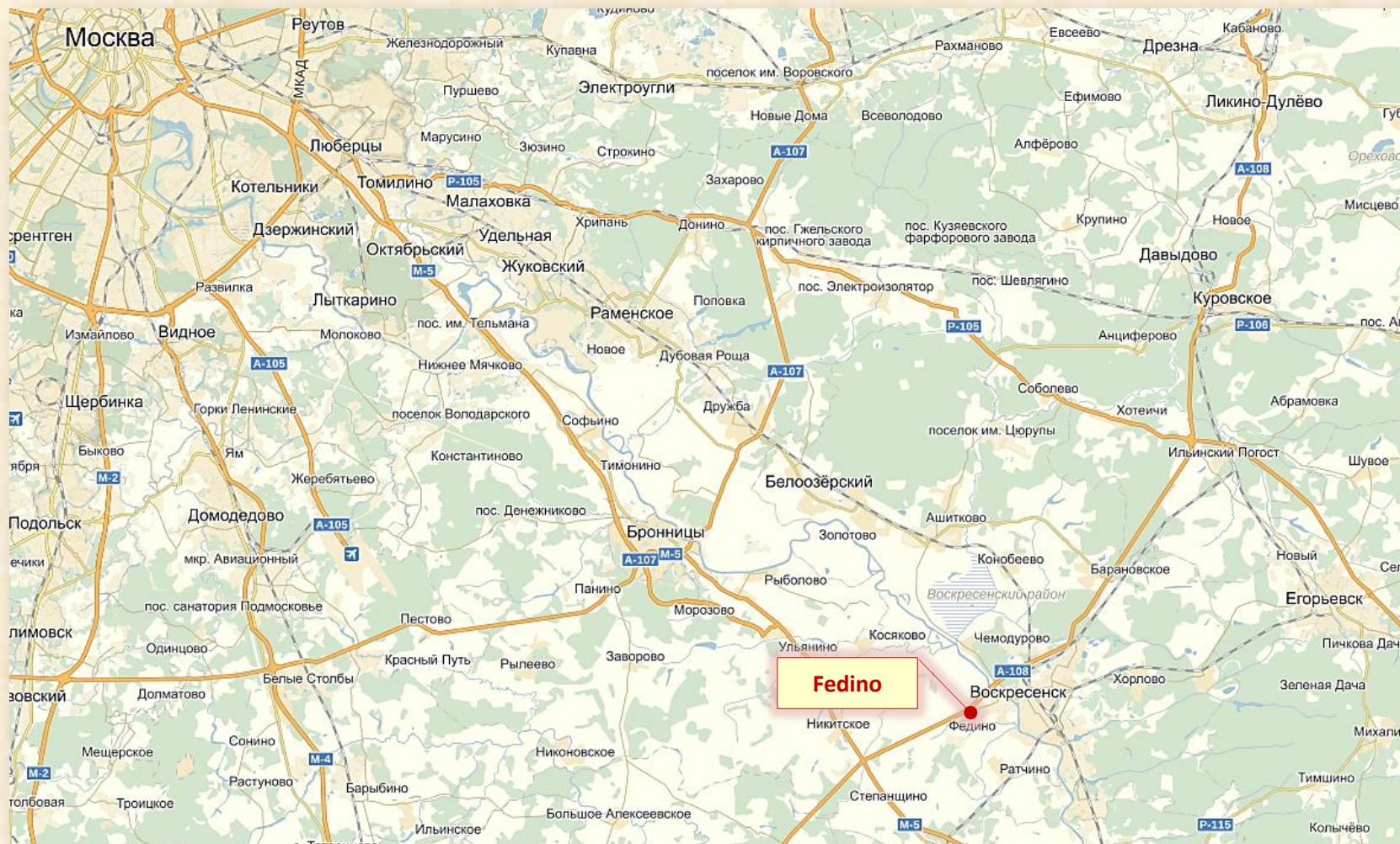


Voskresensk district





Location on the territory of the Moscow region

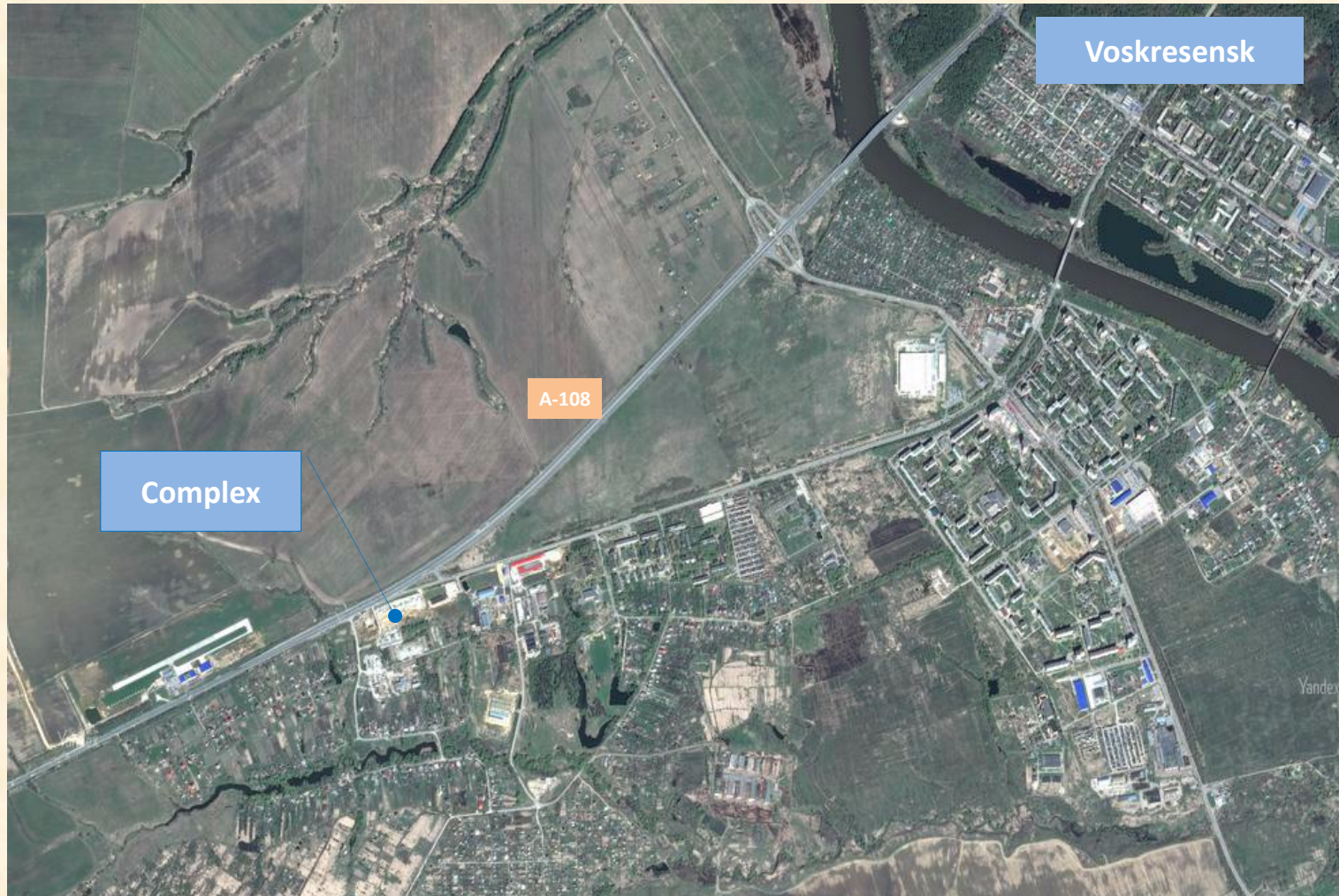


Industrial and warehouse complex

Location on the territory of Voskresensk district



Location - the photo from the satellite



Industrial and warehouse complex

Features of an arrangement and address

Features of an arrangement:

- It is located on the federal highway A 108;
 - In 8 km from the Novoryazanskoe highway;
 - In 70 km from Moscow ring road and 75 km from a mall "Gardener";
 - In 5 km from the city of Voskresensk, the regional center of the Moscow region with the population about 95 thousand people;
 - On removal of 8 km from railway station Voskresensk;
 - On removal of 72 km from the Domodedovo airport
-



Postal address:

140209,

Russian federation,

Moscow region, Voskresensk district,

Fedino village

Vtoraya proizvodstvennaya street, structure 21

Brief description of the complex

The structure of the property complex includes:

- ❖ Office buildings ;
- ❖ Commercial buildings with a trade pavilions ;
- ❖ Industrial building;
- ❖ The hotel type building;
- ❖ Warehouse buildings;
- ❖ Parking's for automobiles and trucks.

Transport availability is very comfortable. There is an automobile access road with the federal highway A-108 providing an exit to any directions.

The nearest airports – Bykovo (63 km) and Domodedovo (72 km).

Infrastructure: power supply – transformer substation, thermal networks and gas supply.

The complex is located on the land and belongs Ltd. "Gostilovo" the right of ownership. All buildings have passed state registration and have the appropriate certificate of ownership.

General use of the complex - commercial and industrial and warehouse.

Complex - the photo 1



Industrial and warehouse complex

Complex - the photo 2



Industrial and warehouse complex

Complex - the photo 3



Industrial and warehouse complex

Complex - the photo 4



Industrial and warehouse complex

Trade and retail complex – the first line



Comments:

- On the first line there are 22 trade pavilions
- the area of trade pavilions are from 17 to 57 square meters
- convenient parking for transport on 200 cars

Industrial and warehouse complex – the second line



Comments:

- On the second line there are 2 two-storeyed buildings
- The area of buildings are 650 and 1300 square meters

Advantages of use

Rent of the squares at territories of a complex allows:

1. Effectively use the economic capacity of Moscow and Moscow area.
2. Most fully and quickly provide the population daily demand goods for reasonable prices.
3. Place local production of goods closer to the end user.
4. Store goods, raw materials and accessories
5. Provide accommodation in comfortable conditions for the personnel of the tenant
6. Realize production in the retail network located on the federal highway A 108.
7. Store the freights in containers on a special parking (20 tons, 40 tons)
8. Provide a parking of heavy-load and passenger vehicles.

Use options

- production - light industry
- warehouse - storage of consumer goods



Contact us

Phone number: +7-985-127-2429

E-mail: A108rent@gmail.com

A108rent@mail.ru

Website: www.гостилово.рф